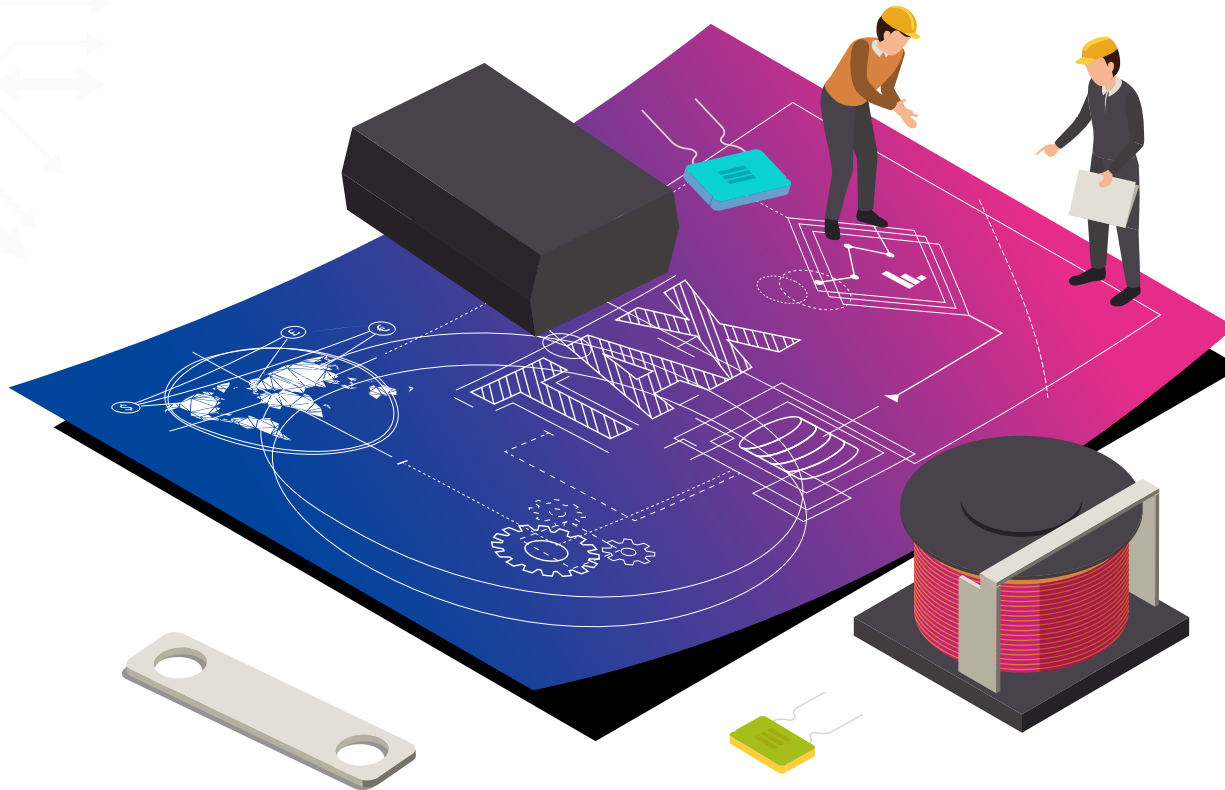
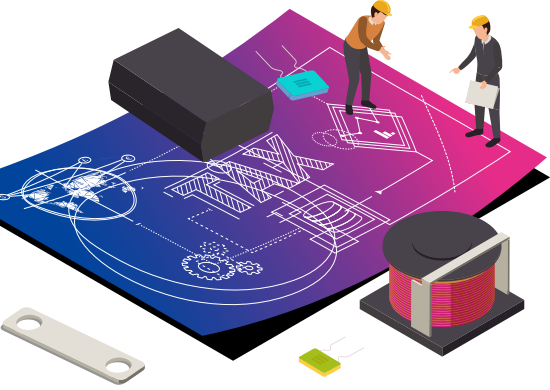


Tax Technology Practice



Transform your tax workflows with robust, refined
and future-proofed technology for your ERP



Tax Technology Practice

Overview

BETTER Tax Technology is rapidly becoming a necessity for enterprise level businesses trading across multiple tax regimes with multijurisdictional compliance requirements. However, it is often the case that the in-house knowledge and understanding of Tax Technology is unavailable.

What is it?

Our Tax Technology Practice (TTP) provides a go-to unit of highly skilled resources offering a wide variety of expertise across numerous technology platforms with a common goal: *Accuracy* for *Tax Determination*, *Reporting* and *Accountability*.

Innovate's TTP offers a variety of services designed to be applied at the *right time* to the *right gap* in any tax tech programme.

Contents

Our TTP services are the perfect companions for your existing Tax and Technology teams, with the aim to enhance any new or existing Tax Control Framework.

Flexibility is really important when dealing with large complex businesses', which is why they've been designed to work either as stand-alone services or combined together for the ultimate enhancement package.

1

Tax engine implementation

2

ERP solution review

3

Project governance support

4

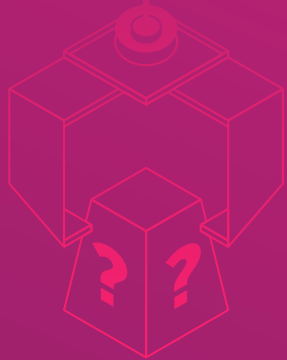
Tax technology selection

↑
enhancements



- Tax Control Framework -

1 Tax Engine Implementation



Why settle for anything less than expert integration with tax dedication?

We are *the global experts* in tax engine implementations. Our market-leading methodology and proprietary content assures always accurate, automated tax determination.

But what of the future? We'll *continually maintain your solution* so that you can be confident that you'll always generate the right tax treatment, whatever business changes may emerge, e.g. new product additions, tax changes etc.

With experience of *Vertex, Thompson Reuters OneSource, Sovos, Avalara* and *other tax technology software*, our dedicated implementation team will ensure your project is delivered successfully.

 VERTEX®

 Avalara

THOMSON REUTERS
ONESOURCE™

SOVOS
SOLVE TAX FOR GOOD™

CCH® SureTax®

We engage tax engine implementations with a very clear model:

1. The tax requirements are put to the very front of the conversation - we aren't afraid of them.
2. We don't offshore the delivery
3. We aren't a body shop; you'll deal with the same person during discovery, until 'go-live'.
4. Deep knowledge of the products/capabilities makes for success - experience is key.

Clearly the selection of technology is an important aspect of Tax Engine delivery. Even so, whatever technology is chosen, the essentials of tax determination are universal. We make sure these key data points are clearly defined and conducive to enable the technology to fulfil its intended function.

US Tax engines for European VAT = No problem, if you understand the true concepts.

Without process, a solution will fail. Let us help you...

2 ERP Solution Review

Are you ready for new technology to be added to your IT estate? We can help...

The ERP is integral to any compliant and efficient indirect tax solution. *Master Data* held within the ERP is the key ingredient for success, but are you ready for new technology?

Allow us to give you a new perspective...

As part of our solution review service, our team will meet with different areas of your business to understand your tax requirements and finance processes.

Our appraisal of your ERP technology will:

- ▶ uncover any constraints or limitations
- ▶ evaluate your overall tax processes, and
- ▶ spot potential risks that could lead to non-compliance

You will receive a *comprehensive report* that with a risk indicator score against each focus area. The report will provide you with much needed clarity on just how effective your current systems and processes truly are.

Depending on the report's findings, we'll also make *recommendations for improvements* in the short and long-terms to **reduce the burden of tax compliance on your business.**

ORACLE®

workday®

SAP®

Microsoft Dynamics 365

EPICOR®

infor

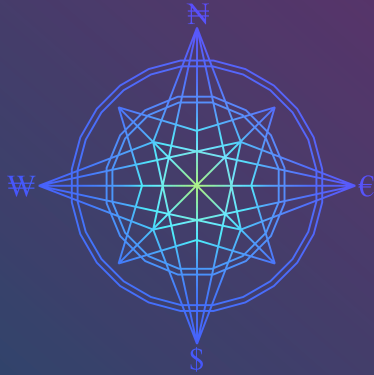
ORACLE®
JD EDWARDS

ORACLE® NETSUITE

Sage

IFS

3 Project Governance



*Let us keep your project **honest***

Our team can help monitor, manage, maintain and steer multi-phase / multi-regional technology projects.

We'll work with your knowledgeable in-house stakeholders to plan realistic, achievable project goals – with an implementation strategy that aligns with your business' priorities and reflects the true capacity of the resources and software available.

You couldn't be in safer hands; our Project Governors are made up of a team of Programme Leaders, Project Managers and Subject Matter Experts - all experienced in the rigors of multi- agenda engagement, fully conversant with the software and astutely aware of the pain points of any implementation.

Tax Engines all do the same thing don't they...?

Each Tax Engine available today has its own strengths and weakness which aren't always obvious to the untrained eye.

Whether it's the availability or robustness of the connectors and interfaces into other financial systems, or perhaps the ability to manage Use Tax certificates, each vendor offers its own mix of advantages.

We'll collaborate with your internal Tax & IT Departments, helping you to navigate through the sales spiel, and plot the most expeditious route to project success.

One size does certainly not fit all where tax is concerned...

We take a clinical approach to help our clients select the right technology to suit their indirect tax needs across numerous and varied regimes; *we'll match your present and future needs* against the capabilities of each option so you can make the informed decision.

4 Tax Technology Selection



Why Innovate?

For us, indirect tax technology for ERPs is the mainstay of our business. *We boast one of the most experienced tax technology teams in the world.*

Our indirect tax experts and technicians hail from all over the world, many having worked both as independent consultants and client-side within senior IT roles for large, blue-chip organizations. Our unparalleled technical know-how and own first-hand experience of the challenges faced by businesses, makes us your most formidable ally for tax.

Just to solidify our credentials, we've even developed inFlyte™ - our own industry-leading solution specifically for Oracle ERP.

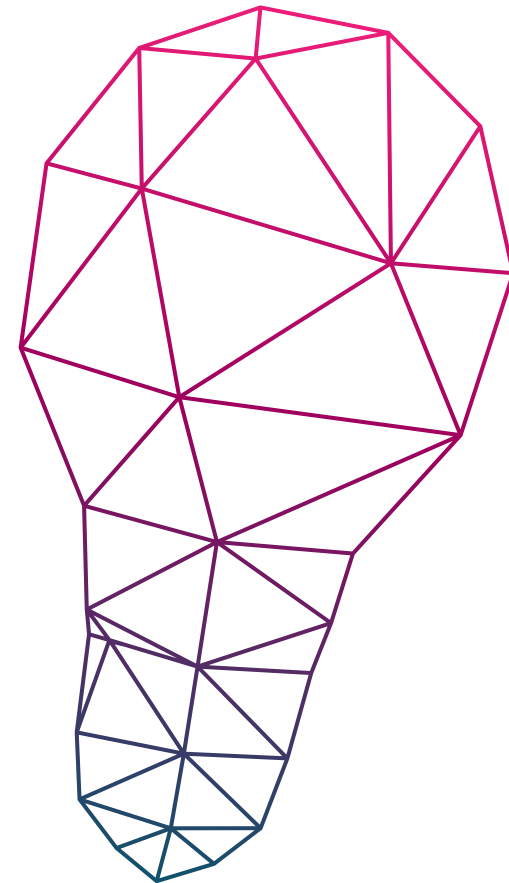
Speak with one of our experts today

Get in touch and discover more about how Innovate Tax could help your business.

Call us on **+44 1243 860893** or why not email us at **sales@innovatetax.com**

There can be no doubt: our considerable experience of multiple ERP systems and tax technology products (including our own) - married with a deep knowledge of global indirect tax requirements – has made us a trusted and long-term tax technology partner of many businesses across the world.

Let us help you to *discover the right technology solution* for your business, so you can focus on the bigger indirect tax picture.



INNOVATE TAX

COMPLIANCE WITHOUT COMPROMISE

www.innovatetax.com

US: +1 408 6229623 UK: +44 1243 860893 UAE: +971 2 654 4181

Copyright © 2021 Innovate Tax Limited. All rights reserved.

All brand and product names are trademarks or registered trademarks of their respective holders.

Innovate Tax Limited is a registered company in England and Wales no.08119496.

Registered address: Innovate Tax Limited, Suite 101 Heath Place, Ash Grove, Bognor Regis,

West Sussex PO22 9SL